



RUSSIAN WEEK  
OF TEXTILE  
INDUSTRY

TIMIRYAZEV CENTRE  
MOSCOW, RUSSIA

# INLEGMA SH

25<sup>TH</sup> ANNIVERSARY  
INTERNATIONAL EXHIBITION  
FOR EQUIPMENT FOR THE TEXTILE  
AND GARMENT INDUSTRY



16—19.03.2026

12+



ORGANISED BY

EXPOCENTRE



[WWW.INLEGMA SH-EXPO.RU/EN](http://WWW.INLEGMA SH-EXPO.RU/EN)



# INLEGMASH

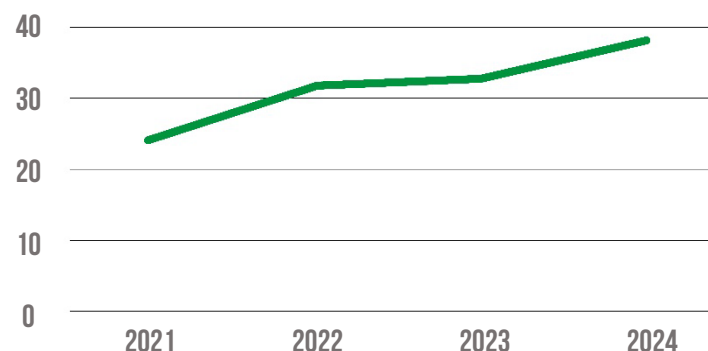
## THE RUSSIAN MARKET OF EQUIPMENT FOR THE TEXTILE AND GARMENT INDUSTRY

- SHARE OF IMPORTED EQUIPMENT ON THE RUSSIAN MARKET AT YEAR-END 2024 IS 90%
- THE VOLUME OF IMPORT OF EQUIPMENT TO RUSSIA AT YEAR-END 2024 IS USD 130 MILLION
- A 2-FOLD INCREASE IN IMPORTED PURCHASES OF MACHINES FOR EXTRUDING, STRETCHING, TEXTURING AND CUTTING MAN-MADE TEXTILE MATERIALS

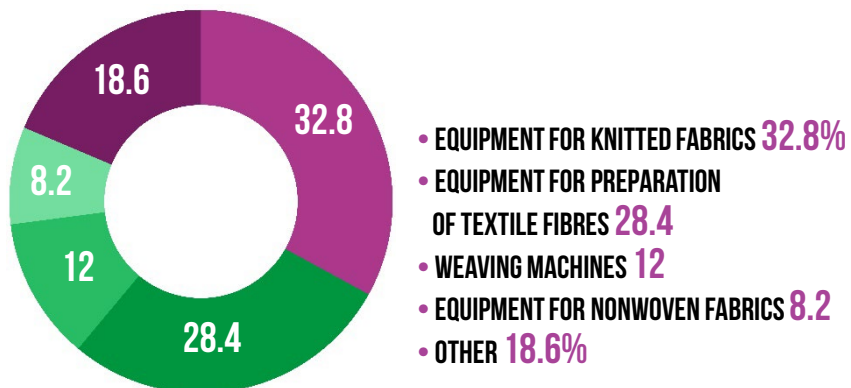
SERVICE LIFE OF EQUIPMENT IN RUSSIA, %

< 10 years	37%
11-20 years	24%
20+ years	39%

DYNAMICS OF PRODUCTION VOLUME OF EQUIPMENT FOR THE TEXTILE AND GARMENT INDUSTRY IN RUSSIA, MILLION USD



IMPORT BY TYPES OF EQUIPMENT IN 2024, % OF COST



IMPORT OF EQUIPMENT BY COUNTRIES IN 2024, % OF COST





# INLEGMASH

**INLEGMASH** IS THE LARGEST IN RUSSIA AND CIS CONGRESS AND EXHIBITION  
DEDICATED TO EQUIPMENT FOR THE TEXTILE AND GARMENT INDUSTRY



**FOR MORE THAN 55 YEARS, INLEGMASH**

HAS BEEN BRINGING TOGETHER MANUFACTURERS, SUPPLIERS  
AND CUSTOMERS OF EQUIPMENT, COMPONENTS, SPARE PARTS  
AND CONSUMABLES FOR THE TEXTILE AND GARMENT INDUSTRY  
AND DEMONSTRATED EQUIPMENT FOR ALL STAGES OF TEXTILE  
AND GARMENT PRODUCTION

**163** EXHIBITORS FROM **12** COUNTRIES

**7,300**  
VISITORS

**79**  
REGIONS  
OF RUSSIA

**288**  
CITIES OF RUSSIA

**22**  
EVENTS OF THE  
CONFERENCE  
PROGRAMME

**103**  
SPEAKERS

**685**  
DELEGATES

**90%**  
OF EXHIBITORS  
DEMONSTRATE EQUIPMENT  
AND MACHINERY



RESULTS 2025



PART OF



**RUSSIAN WEEK  
OF TEXTILE  
INDUSTRY**



**SINCE 1970**



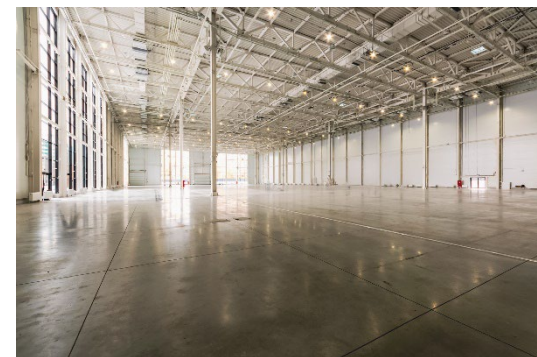


# INLEGMASH

## NEW VENUE — NEW OPPORTUNITIES

**IN SPRING OF 2026, INLEGMASH WILL  
ONCE AGAIN BRING TOGETHER  
LEADING MANUFACTURERS  
AND DISTRIBUTORS OF EQUIPMENT  
FOR THE TEXTILE AND GARMENT  
INDUSTRY.**

**THIS TIME AT A NEW VENUE —  
TIMIRYAZEV CENTRE**



**TIMIRYAZEV CENTRE IS ONE OF MOSCOW'S NEW STATE-OF-THE-ART EXHIBITION VENUES  
THAT HOSTS TRADE SHOWS AND BUSINESS EVENTS AT A HIGH TECHNOLOGICAL  
AND ORGANISATIONAL LEVEL. THE CENTRE WAS OPENED IN 2024.**

### TRANSPORT ACCESSIBILITY



**7 MINUTES**

WALK FROM THE PETROVSKO-  
RAZUMOVSKAYA METRO STATION



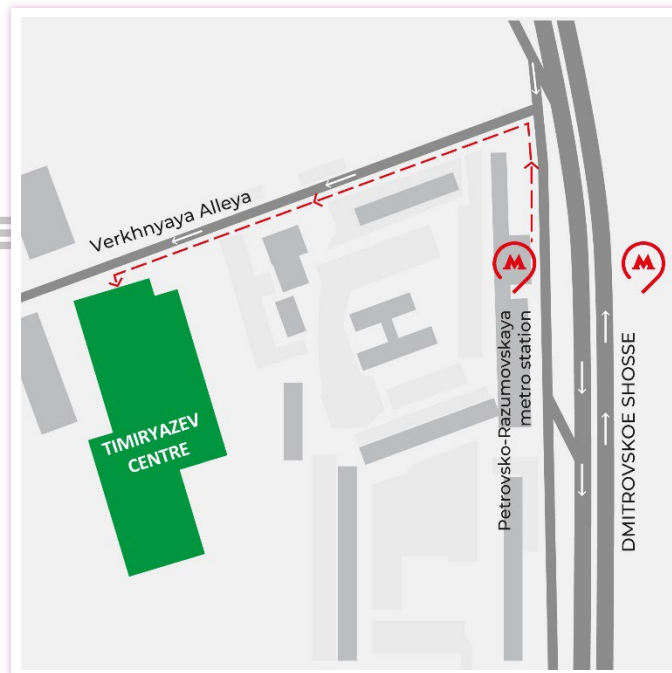
**20 MINUTES**

BY TAXI FROM THE  
SHEREMETYEVO AIRPORT



**30 MINUTES**

BY CAR TO MOSCOW  
DOWNTOWN





# INLEGMASH

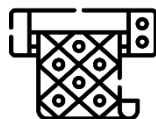
## PRODUCT SECTORS



**EQUIPMENT FOR  
SPINNING**



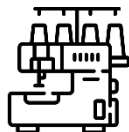
**EQUIPMENT FOR  
WEAVING**



**FABRIC PRINTING  
EQUIPMENT**



**EQUIPMENT FOR  
KNITTING PRODUCTION**



**EQUIPMENT  
FOR SEWING  
PRODUCTION**



**EQUIPMENT FOR  
PRODUCTION OF TECHNICAL  
TEXTILES AND NONWOVENS**



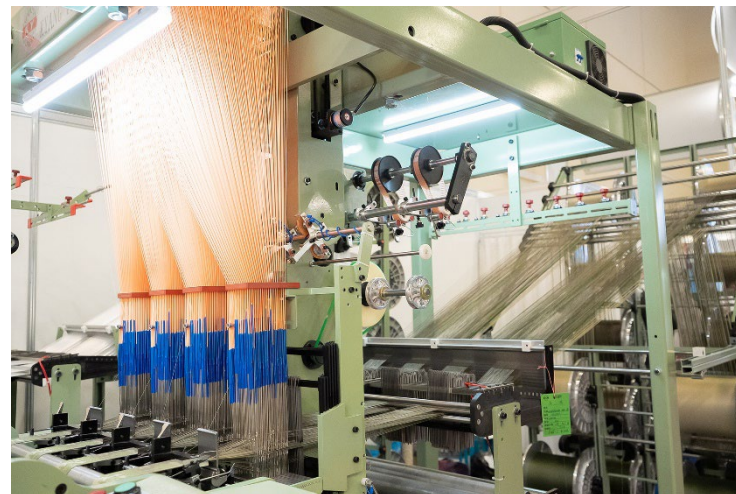
**DYES, TEXTILE  
CHEMICALS,  
CONSUMABLES**



**SPARE PARTS,  
ACCESSORIES AND  
TECHNICAL EQUIPMENT**



**EQUIPMENT FOR  
FOOTWEAR AND LEATHER  
GOODS PRODUCTION**



**LEARN MORE ABOUT PRODUCT SECTORS**

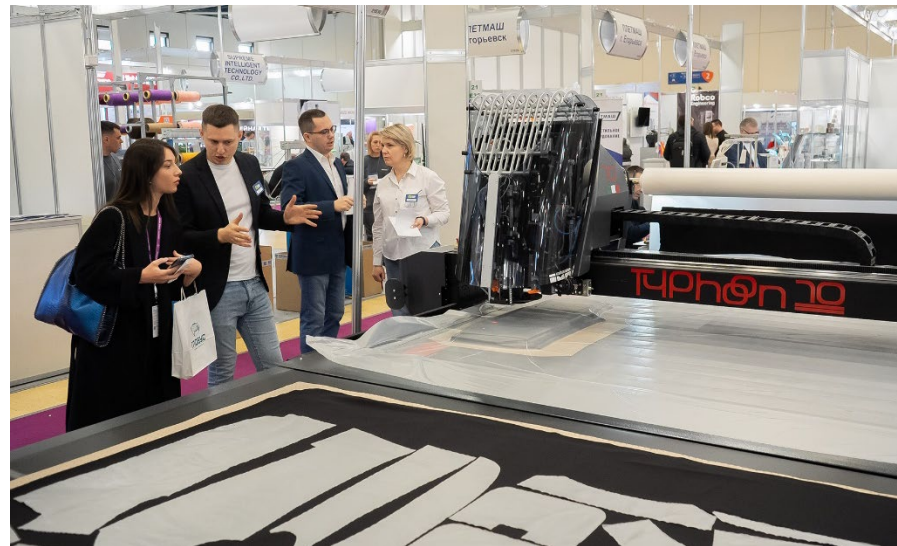






# INLEGMASH

## EXHIBITORS



163

EXHIBITORS

12

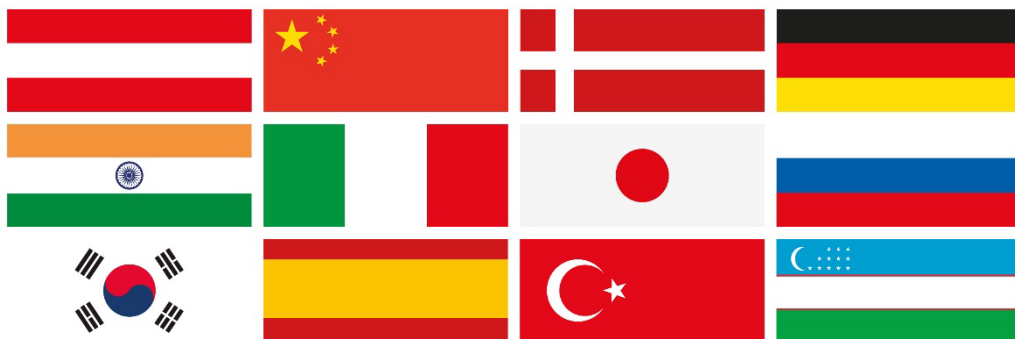
COUNTRIES

73

RUSSIAN  
COMPANIES

90

FOREIGN  
COMPANIES



## EXHIBITORS

- N MEKATRONIK
- BRODITA
- KINWAH GROUP COMPANY
- MECHANO
- REMAK MAKINA
- PRASHANT
- CHINA TEXMATECH CO. LTD. (CTMTC)
- ZHEJIANG RIFA TEXTILE MACHINERY CO. LTD.
- JIANGYIN MOST INTERNATIONAL TRADING CO. LTD.
- AND OTHERS



# INLEGMASH

## VISITORS

**7,300 VISITORS**

**20 COUNTRIES**

**79 REGIONS OF RUSSIA**

**288 CITIES OF RUSSIA**

### INDUSTRY SECTORS OF VISITORS

TEXTILE PRODUCTION AND PROCESSING

PRODUCTION AND PROCESSING  
OF TECHNICAL TEXTILES AND NONWOVENS

ACCOMPANYING TECHNOLOGY/  
GOODS/SERVICES

EQUIPMENT AND TECHNOLOGY:  
DEVELOPMENT, DELIVERY, SETUP, SERVICING

R&D, EDUCATION

WEAVING PRODUCTION

SEWING PRODUCTION

PRODUCTION OF KNITTED CLOTHES AND HOSIERY

### OUR VISITORS ARE THE LARGEST FACTORIES AND MANUFACTURERS OF FINISHED PRODUCTS

- SEWING FACTORIES
- PRODUCTION AND PROCESSING  
OF TECHNICAL TEXTILES
- TEXTILE FACTORIES
- TEXTILE PRODUCTION  
AND PROCESSING
- COTTON PRODUCTION
- MANUFACTURERS  
OF FINISHED PRODUCTS
- FURNITURE PRODUCTION
- WEAVING PRODUCTION
- PRODUCTION AND PROCESSING  
OF LEATHER GOODS







### VISITOR PREFERENCES



Multiple replies possible



**88%** PROFESSIONAL VISITORS

**90%** WOULD RECOMMEND INLEGMASH TO PARTNERS AND PEERS

**83%** PURCHASING DECISION-MAKERS OR INFLUENCERS

**70%** PLAN TO MAKE PURCHASES POST EVENT

**64%** CEOs OR TOP MANAGERS

**52%** NEWCOMERS

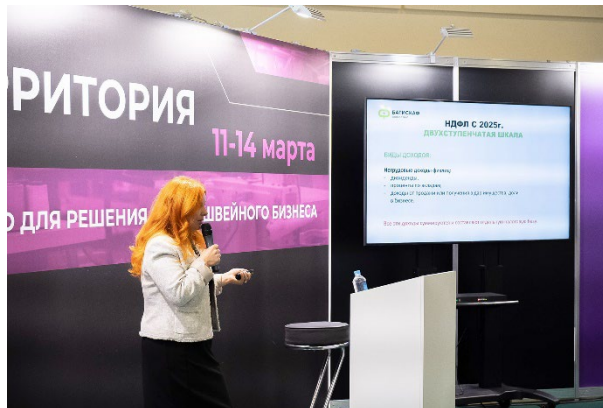




### THE 5<sup>TH</sup> EDITION OF THE INLEGMASH INTERNATIONAL INDUSTRY CONFERENCE WAS HELD IN 2025



**22** EVENTS



**100+** SPEAKERS



**680+** DELEGATES

[LEARN MORE ABOUT THE CONFERENCE PROGRAMME](#)





### KEY EVENTS

#### THE INLEGMASH INTERNATIONAL INDUSTRY CONFERENCE

The conference includes a series of different thematic events that cover the full range of issues from investments and government support to advanced technology (AI, digital printing, etc.) and real life cases for improving business efficiency.



#### FORUM ON TECHNICAL TEXTILE: THE BASIS FOR SCIENTIFIC AND TECHNOLOGICAL DEVELOPMENT OF RUSSIA

The forum brings together leading experts to review innovations and discuss the prospects for the development of this sector, the advantages and economic feasibility of the production of technical textiles in Russia, to present projects and scientific developments, as well as to highlight the problems that hinder the development of the production of technical textiles.

#### SEWING TERRITORY INTERACTIVE SPACE

A new project that includes thematic masterclasses, business games, workshops and Q&A lectures from top representatives of the garment industry and the largest exhibitors





# INLEGMASH

## TESTIMONIALS



**IGOR KIM**

**GENERAL DIRECTOR,  
SPORTTEX**

"INLEGMASH is once again remarkable. There are a lot of visitors. The stands are wonderful. And there are plenty of new products. I always take part in INLEGMASH. My potential clients come here. I believe that this exhibition is better than the previous ones. Every goal we set will be achieved and exceeded. I decided not to take part in three exhibitions this year, but left INLEGMASH on my list and even broadened the range of exhibits. INLEGMASH is my life, my joy, and I will remain its regular participant."



**GADZHI KADIYEV**

**HEAD OF THE REPRESENTATIVE OFFICE  
IN RUSSIA, JUKI**

"INLEGMASH is a platform distinguished by its stability and a meeting point for industry professionals, new partners and old friends. Today is the first day of the exhibition, and we have already made a number of very interesting contacts with new clients. We are very grateful to INLEGMASH for the opportunity to display our equipment and introduce visitors to quality hardware. I would like to congratulate everyone once again. Fifty-five years is a young age for a serious exhibition. The venue does not matter, what actually matters is people. We communicate with people, we make equipment for people, and people come first. We will follow the exhibition wherever it goes. This exhibition manages to maintain its brand, the high brand of European and world level. Thank you all very much."



**IVAN NAUMOV**

**DEVELOPMENT DIRECTOR,  
MATEK**

"MATEK welcomes all colleagues and exhibitors at the 55th anniversary edition of INLEGMASH. This is the place where we, equipment suppliers, can demonstrate the latest technologies and solutions. MATEK is a representative of the Japanese company Yamato. Thanks to the conference programme of this exhibition we can demonstrate the latest achievements of that company. INLEGMASH invariably brings approximately the same results year after year. Judging by the visitor turnout on the first day, we believe it was very busy. We are hoping to see more visitors tomorrow and the day after tomorrow."



**IHSAN MOKANOGLU**

**MANAGING DIRECTOR,  
EFFE**

"Why is this exhibition so important to us? Because it offers plenty of opportunities to meet with potential clients and spend quality time with old ones. If we are not here, if we choose not to participate, they may think their good business partner is not here because it does not care about them. They may think it does not care about the Russian market. No, we are here and we will keep working for new clients and existent, long-standing, esteemed clients."



**ALEXANDER BRONEVITSKY**

**SALES DIRECTOR,  
NISSA**

"Compared to last year, this exhibition has many more exhibitors and the stands are larger and more substantive. We have also tried to enlarge the space of our stand, the number of exhibits, and the number of invited participants this year. We are happy to grow together with the exhibition and to see the exhibition growing year after year. This is the central exhibition for the textile industry. This is obvious, at least, to us. I mean we prefer this exhibition to all other events."

[READ MORE TESTIMONIALS](#)







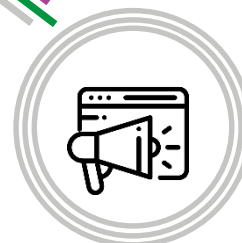
# INLEGMASH

HOW WE ATTRACT THE TARGET AUDIENCE TO INLEGMASH



## DIRECT MARKETING

Electronic mailings and telemarketing campaigns.  
Audience coverage is 50,000+ people



## PROMOTIONAL ACTIVITIES

INLEGMASH promotion at industry-related events. 15+ events a year



## INTERNET

Exhibition advertising in search engines and industry internet portals. Total coverage is 300,000+ people



## RELEVANT CONFERENCE PROGRAMME

Only the most relevant discussion topics



## MASS MEDIA

Press about INLEGMASH



170+ publications in printed and electronic media



# INLEGMASH

YOUR UNIQUE OPPORTUNITIES  
AT INLEGMASH

## ENJOY THE SYNERGY EFFECT

INLEGMASH is a key part Russian Week of Textile Industry. The Week's events provide a synergetic effect for its participants by attracting the attention of potential customers to the exhibited equipment and services. Thus, you have a great opportunity to present your company both to visitors of INLEGMASH, who are professionals of the industry, and to potential customers of enterprises, companies, manufactures, offering their products at the related events of the Week.

**Our visitors are your clients and customers!**

## ADVERTISE AND PROMOTE

We publish news of our exhibitors on the show's website and in the industry media. You benefit from a huge industry coverage. We promote exhibiting companies according to the show's advertising campaign and also offer exclusive promotion opportunities according to advertising and sponsorship packages for exhibitors.

## SHOW YOUR PRODUCTS

Seize the opportunity to demonstrate your products to the target audience, including executives and owners of large sewing, knitting and textile enterprises.



## TAKE PART IN THE CONFERENCE PROGRAMME

Share your best practices and show your products to a wider audience within the INLEGMASH conference programme.

## SELL AT THE SHOW

It is a selling show. Most of the equipment on the stands finds its customers during the days of the show. As a result, on the last day of INLEGMASH most of the exhibited equipment is labelled 'Sold'.



# INLEGMASH



**RUSSIAN WEEK  
OF TEXTILE  
INDUSTRY**



## CONTACTS US

**GALINA PETUNINA**  
EXHIBITION DIRECTOR



**+7 (499) 428-03-37**



[PETUNINA@EXPOCENTR.RU](mailto:PETUNINA@EXPOCENTR.RU)

**ANNA GROMOVA**  
PROJECT HEAD



**+7 (499) 428-03-41**



[GROMOVA@EXPOCENTR.RU](mailto:GROMOVA@EXPOCENTR.RU)

**25TH ANNIVERSARY INTERNATIONAL EXHIBITION  
FOR EQUIPMENT FOR THE TEXTILE AND GARMENT INDUSTRY**

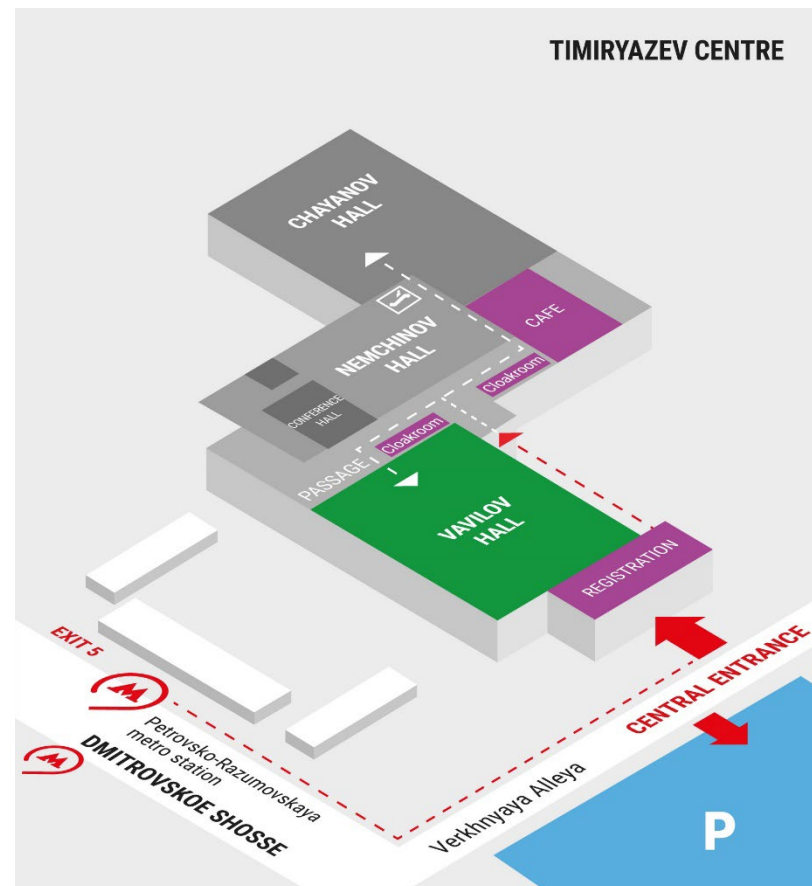
**VAVILOV HALL  
TIMIRYAZEV CENTRE  
MOSCOW, RUSSIA**



[WWW.INLEGMASH-EXPO.RU/EN](http://WWW.INLEGMASH-EXPO.RU/EN)

[VK.COM/INLEGMASHEPO](https://vk.com/inlegmashepo)  
[T.ME/INLEGMASHEPO](https://t.me/inlegmashepo)

**TIMIRYAZEV CENTRE**



12+



**BOOK A STAND**

